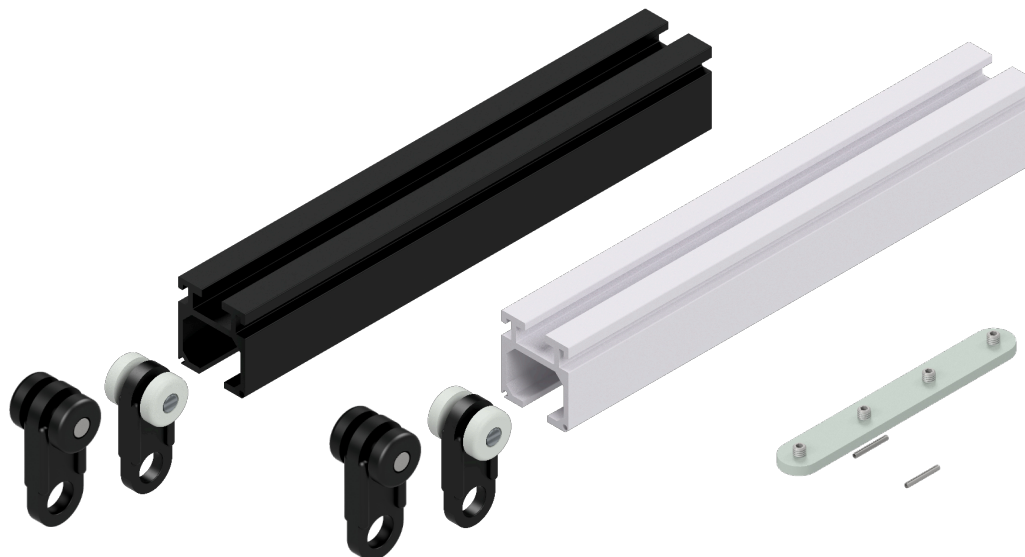


2Way Track System

2Way track is a simple & robust aluminium extrusion track suitable for all hand drawn drapery applications.

For use on stage, backstage, within auditoriums, for studios and heavy domestic and commercial requirements.



2Way track is an aluminium extruded system, available in self colour aluminium or black anodised finish.

The lower part of the track contains a channel that accepts wheeled carriers that have either plain or ball raced bearings.

Both types of carrier are 22 mm (7/8") wide for calculating stacking distances. Carriers are normally attached to curtains at 300 mm centres. The leading carrier is 66 mm (2 5/8") wide and this can be fitted with an overlap arm if required.

There are 2 'L' shaped slots in the side of the track for attaching the track flush to a soffit or ceiling with 2W1701 ceiling clips.

Each joint set comprises a flat plate with 4 grub screws and 2 roll pins.

2Way is intended to be used for systems where cording is not required such as side masking curtains, perimeter tracks in studios, acoustic curtains and any application where walkalong operation is required.

Our revolutionary new 2Way points system for right angle junctions or stacking and storage areas is also now available, making 2Way systems for even the most complex of layouts.

Technical Details

External dimensions are 35 mm x 40 mm

Upper channel accepts an M8 threaded hammer nut from which to suspend the track with a selection of standard brackets, studding or custom fabrications

Available in 6100 mm (20ft) lengths with custom cut lengths available

Minimum radius of 300 mm with custom radius and angles available