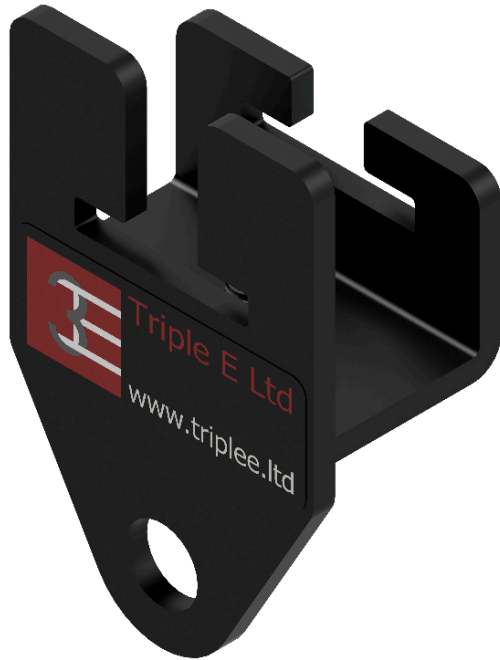


Erail End Stop



Technical Details

Part No: ERL2401

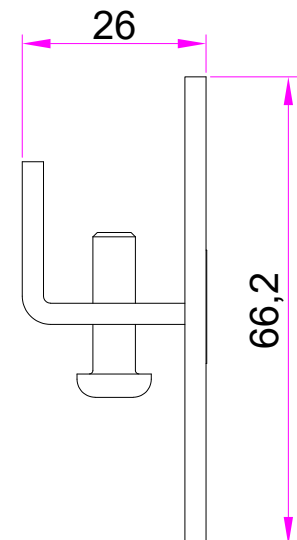
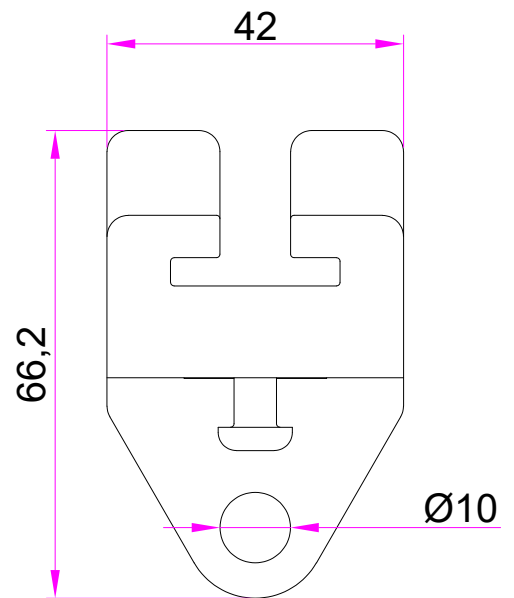
Weight: 0.085 kg





WLL: N/A

Material: Mild Steel

Finish: Black Powder Coated

This End Stop is designed to be mounted anywhere along the Erail track extrusion. It provides an anchorage point via a 10 mm diameter hole for the trailing edge of curtains when placed at the ends of the track.



 +44 (0) 1959 570 333
 www.triplee.ltd
 info@triplee.ltd
 @tripleeltd

Equipment **E**ngineered for **E**ntertainment

