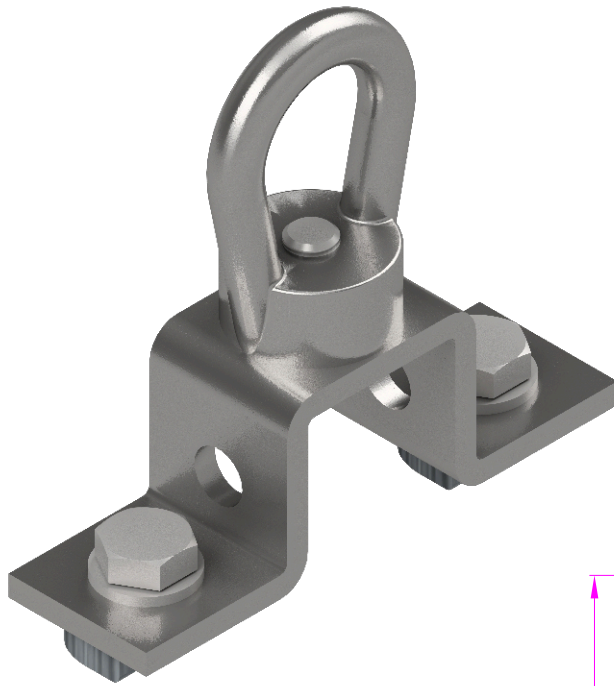


UniBeam Deadline Fixing



Technical Details

Part No: UBM1501

Weight: 0.652 kg

WLL: 150 kg

Material: Mild Steel

Finish: Bright Zinc Plated

The UBM1501 is used to suspend UniBeam sections by rope cordage or wire rope. It comprises of a forged fitting and threaded M12 bush with a solid tubular loop springing from the top outer edges of the bush. The fitting is then connected to a top hat bracket which has channel nuts at either end to fix it to the UniBeam track.

