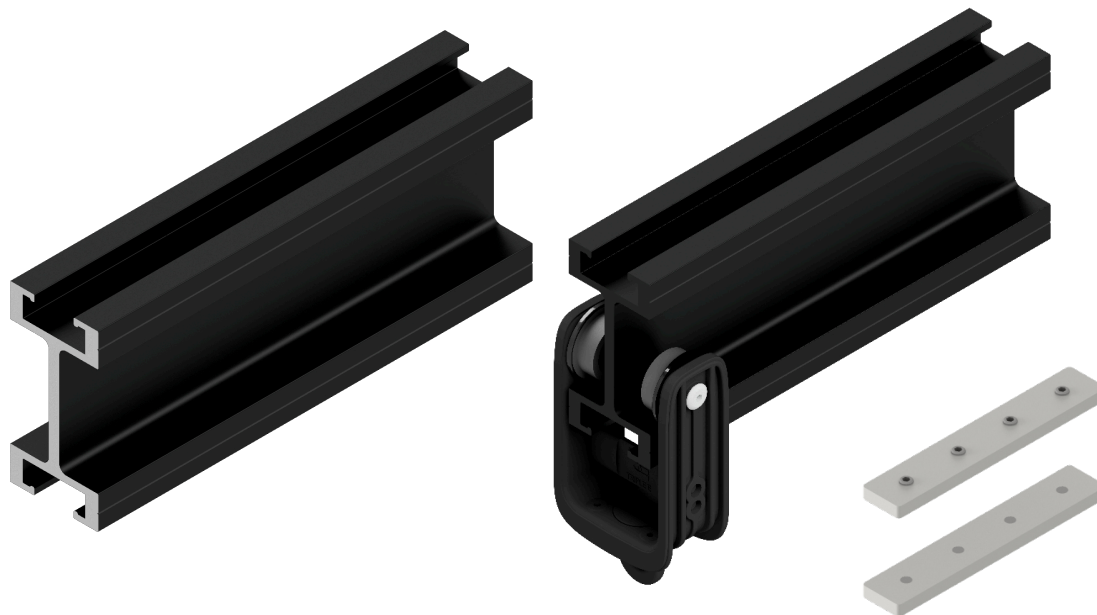


UniBeam Track System

UniBeam is our heaviest duty track, an aluminium extrusion and black anodised as standard.

UniBeam is designed for the heaviest and most demanding uses in main stage venues, TV Studios and site specific requirements.



UniBeam is the best choice for complex, heavy duty, or unusual requirements. It can be used horizontally or vertically; for performer flying; tracking lanterns or even as a fly bar.

With its unrivalled range of uses and strength UniBeam is a track without comparison for its potential applications within the entertainment and built environment industries.

Its dimensions are the same as UniTrack so the two systems share many components, swapped simply with a change of hardware.

Steel plates and grub screws are used to join and align separate track sections whilst maintaining its high strength and rigidity.

With the ability to be rolled to custom shapes UniBeam is the track the industry chooses to form the base of custom builds such heavy duty floor tracks.

UniBeam has a huge WLL of 1070 kg UDL on 1 m centre suspension points. This track allows for the very largest of opera house drapes and large scenic items such as LED walls to be moved across stages.

Technical Details

External dimensions are 50 mm x 100 mm

Standard finish for all track and components is semi-matt black

Custom RAL finishes to order

Available in 6100 mm (20 ft) lengths with custom cut lengths available

Stock 90 degree curves of 2.0 m and 3.0 m radius with 600 mm straights and custom radius and degree curves to order

Our system of paired joint plates allow for very fast installation times

Motorised operation can be achieved with a plug and play TDrive or TDrive HD motor which swiftly and securely mounts to the track, wall or floor as required.