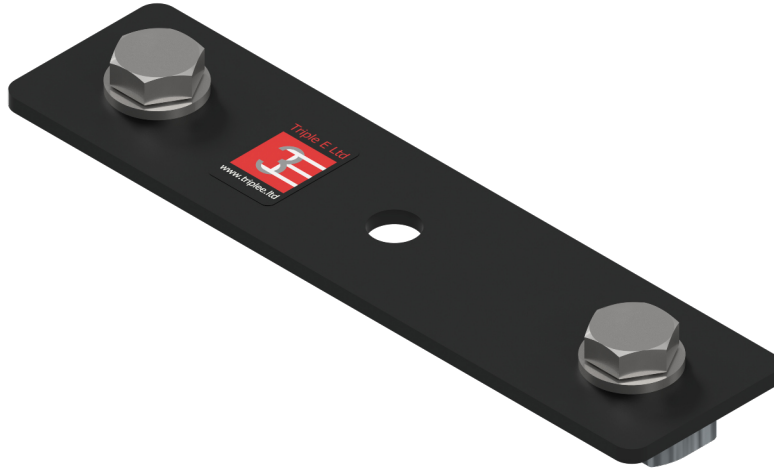


# UniTrack / UniBeam Overlap Clip

## for TRA2802 & UBM2801



### Technical Details

**Part No:** TRA2602

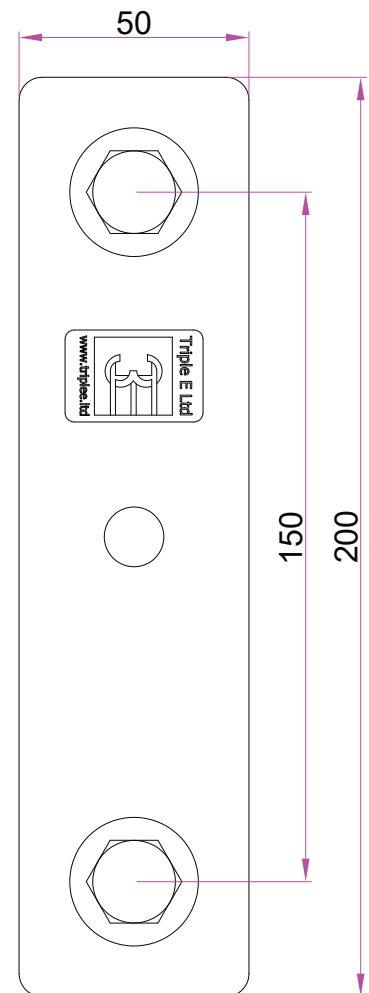
**Weight:** 0.292 kg

**WLL:** N/A

**Material:** Mild Steel

**Finish:** Black Powder Coated

The TRA2602 Overlap Clip is always used in pairs on both UniTrack and UniBeam straight and curved tracks to create 150 mm track centres where they overlap when using TRA2802 or UBM2801 Scenery Carriers.



+44 (0) 1959 570 333  
[www.triplee.ltd](http://www.triplee.ltd)  
[info@triplee.ltd](mailto:info@triplee.ltd)  
[@tripleeltd](https://www.instagram.com/tripleeltd)

Equipment **E**ngineered for **E**ntertainment

